

Pocket filter

Fiberglass ePM1 60%

APPLICATIONS

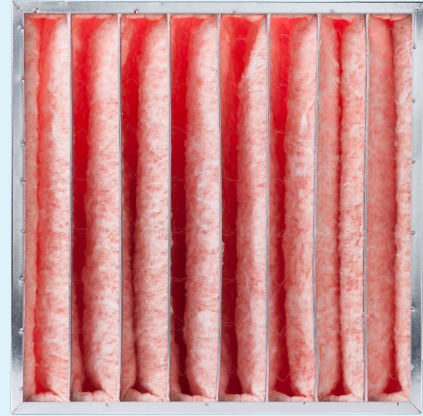
- Fine filtration for air handling units and prefiltration for (H) EPA filters

ADVANTAGES

- The aerodynamic shape reduces turbulence in the airflow
- Tapered pockets reduce pressure drop
- Low energy consumption
- High dust-holding capacity and long service life
- Eurovent certified through the manufacturer

SPECIFICATIONS

- Media: Fiber glass
- Frame: Galvanized steel, also available in wood and plastic
- Recommended final resistance: 250 Pa
- Maximum continuous temperature: 70° Celsius
- Maximum relative humidity: 100%



ARTICLE NUMBER	WIDTH MM.	HEIGHT MM.	LENGTH MM.	NUMBER OF POCKETS	ISO 16890	EN 779	FLOW RATE M3/H	INITIAL RESISTANCE	ENERGY USAGE
01030016	287	287	360	4	ePM1 60%	F7	850	120	1830
01030015	287	592	360	4	ePM1 60%	F7	1700	120	1830
	287	892	360	4	ePM1 60%	F7	2550	120	1830
01030018	490	592	360	6	ePM1 60%	F7	2800	120	1830
	490	892	360	6	ePM1 60%	F7	4200	120	1830
01030014	592	287	360	8	ePM1 60%	F7	1700	120	1830
01030017	592	490	360	8	ePM1 60%	F7	2800	120	1830
01030013	592	592	360	8	ePM1 60%	F7	3400	120	1830
01030026	592	892	360	8	ePM1 60%	F7	5100	120	1830

Alternative sizes on request

ARTICLE NUMBER	WIDTH MM.	HEIGHT MM.	LENGTH MM.	NUMBER OF POCKETS	ISO 16890	EN 779	FLOW RATE M3/H	INITIAL RESISTANCE	ENERGY USAGE
01030010	287	287	500	4	ePM1 60%	F7	850	90	1178
01030009	287	592	500	4	ePM1 60%	F7	1700	90	1178
	287	892	500	4	ePM1 60%	F7	2550	90	1178
01030012	490	592	500	6	ePM1 60%	F7	2800	90	1178
	490	892	500	6	ePM1 60%	F7	4200	90	1178
01030008	592	287	500	8	ePM1 60%	F7	1700	90	1178
01030011	592	490	500	8	ePM1 60%	F7	2800	90	1178
01030007	592	592	500	8	ePM1 60%	F7	3400	90	1178
	592	892	500	8	ePM1 60%	F7	5100	90	1178
01030004	287	287	600	4	ePM1 60%	F7	850	75	1004
01030003	287	592	600	4	ePM1 60%	F7	1700	75	1004
01030028	287	892	600	4	ePM1 60%	F7	2550	75	1004
01030006	490	592	600	6	ePM1 60%	F7	2800	75	1004
01030027	490	892	600	6	ePM1 60%	F7	4200	75	1004
01030002	592	287	600	8	ePM1 60%	F7	1700	75	1004
01030005	592	490	600	8	ePM1 60%	F7	2800	75	1004
01030001	592	592	600	8	ePM1 60%	F7	3400	75	1004
01030025	592	892	600	8	ePM1 60%	F7	5100	75	1004

Alternative sizes on request